



CURRUMBIN WILDLIFE HOSPITAL FOUNDATION

CORPORATE SPONSORSHIP GUIDE

Everything you need to know to support one of the
busiest wildlife hospitals in the world.

www.CurrumbinWildlifeHospital.org.au



THANK YOU

FOR YOUR
SUPPORT!



Currumbin Wildlife Hospital Foundation was created to secure the future of Australia's wildlife. The Foundation directly funds Currumbin Wildlife Hospital and its vital work of treating, rehabilitating and releasing sick, injured and orphaned native wildlife. The Hospital has grown to be one of the busiest wildlife hospitals in the world, admitting almost 14,000 animals in 2020 – a service that is provided free of charge to the community.

The skilled and experienced veterinary team, supported by volunteers, prides itself on providing the highest level of veterinary care to all their patients.

DID YOU KNOW?



Currumbin Wildlife Hospital has released **more than 140,000 native animals** back into the wild since the first vet started work in 1989.



The Wildlife Hospital treats **over 600 wild koalas** every year.

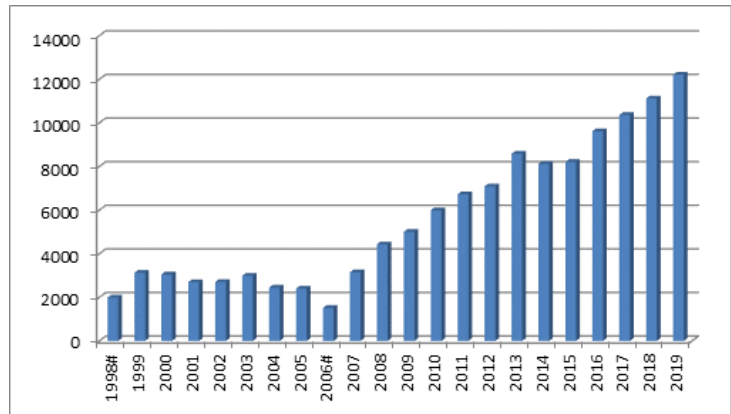


Currumbin Wildlife Hospital Foundation needs to raise over \$1.8 million annually to save Australia's wildlife, and find cures for devastating diseases threatening our native species such as the koala.

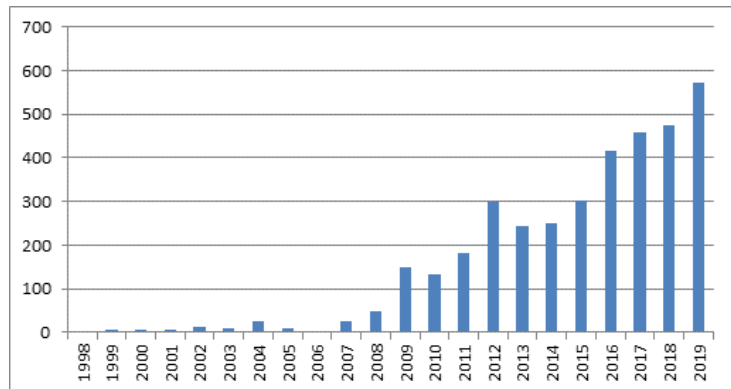
HOW YOUR SUPPORT SAVES AUSTRALIAN WILDLIFE

As one of the busiest wildlife hospitals in the world, **admitting almost 14,000 animals per year (including almost 600 Koalas in 2019)** we seem to be setting patient admittance records annually now. The Currumbin Wildlife Hospital's vital work of treating, rehabilitating and releasing ever-increasing numbers of sick, injured and orphaned native wildlife means the hospital is regularly operating well above human and operational capacity on a more regular basis. With the severe drought conditions and devastating bushfires followed by extensive flooding across South East Queensland, millions of native animals have perished.

TOTAL ADMISSIONS



KOALA ADMISSIONS



The Currumbin Wildlife Hospital has seen a **20% increase in admissions in 2020.**

Our operating costs have subsequently needed to increase at the same rate to cope with increased admissions, taking us to a projected \$1.8 million in operating costs in 20/21 financial year. We rely on limited Government Funding and heavily on the support of donations and our Corporate Partners to keep our Hospital doors open to save wildlife.

WE NEED THE HELP

OF CORPORATE PARTNERS LIKE YOU

MORE THAN EVER

We are at a critical crossroad for our endangered wildlife and their dwindling habitat. Koalas will be extinct by 2050 if we do not take serious steps to invest in their future.

We need continued financial support to ensure the longevity of our iconic Australian animals, as they are extremely important to the local community in Queensland and the entire world.



The drought and subsequent bushfires of 19/20 impacted our wildlife significantly and saw a huge increase of wildlife coming through our hospital doors. Our native koalas were impacted the most as a result of these devastating fires and in 2019 Currumbin Wildlife Hospital treated over 600 koalas from the wild.

Now Australian wildlife recovery is up to us!

The Foundation staff are a small team of hardworking and passionate people who dedicate their time elevating the profile of the Foundation and raising much needed financial assistance and creating major fundraising opportunities. Their dedication to supporting the work of Currumbin Wildlife Hospital is essential to its mission of saving our wildlife.

Currumbin Wildlife Hospital Foundation is a registered Australian charity with an independent Board of Trustees responsible for the governance of the Foundation's activities. By donating to and supporting the Currumbin Wildlife Hospital as a Corporate Partner, you will be helping us to save countless lives and your generosity will help to ensure future generations have the opportunity to see our precious wildlife in the wild.

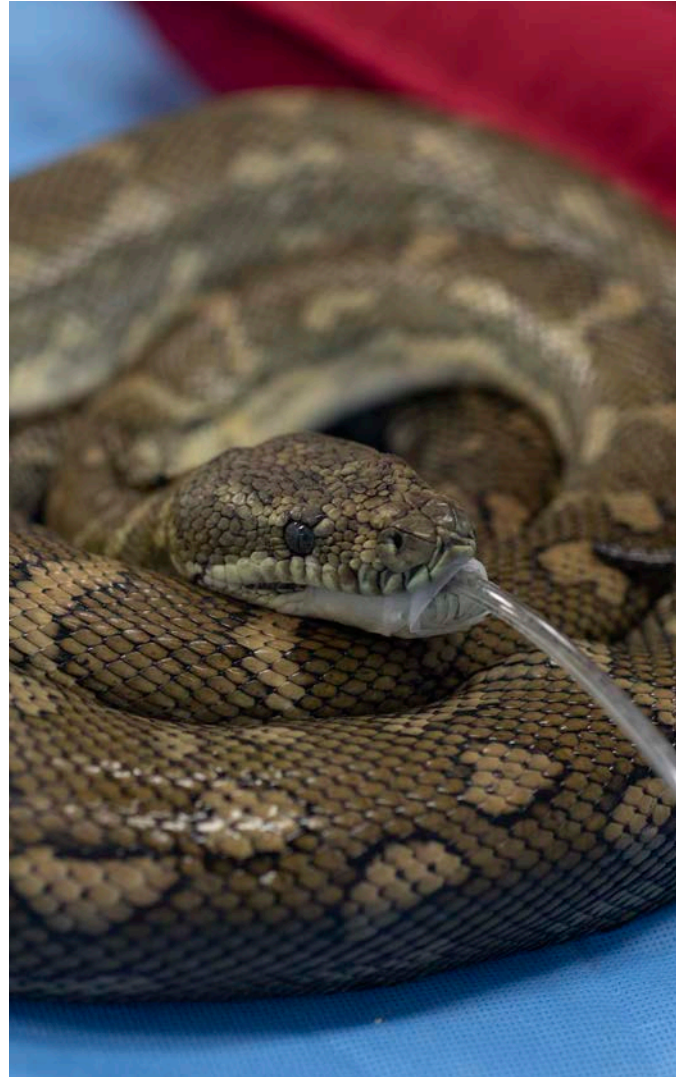
HELP US SAVE YOUR WILDLIFE

BY BECOMING A CORPORATE SPONSOR TODAY!

WHY BECOME A CORPORATE PARTNER?

Currumbin Wildlife Hospital Foundation supports and funds Currumbin Wildlife Hospital, and its vital work of treating, rehabilitating and releasing sick, injured and orphaned native wildlife. The Hospital has grown to be one of the busiest wildlife hospitals in the world, admitting almost 14,000 wildlife patients a year – a service that is provided free of care to the community.

Currumbin Wildlife Hospital survives on the generosity of sponsors and donors to fund the incredible work of the vets, vet nurses, students and volunteers. A donation to our Foundation will go directly towards saving the lives of the many sick and injured native wildlife our Hospital admits every day.



Please join us by becoming a Corporate Partner and help us save Australian wildlife. Your contribution and support is critical in helping the Currumbin Wildlife Hospital maintain the highest standard of care provided to our patients.



PACKAGE 1

CORPORATE PARTNERSHIP

\$500 +GST Annual Renewal

INCLUDES:

- Electronic newsletters to be shared with your organisation
- Partner company name recognition at the Hospital
- Acknowledgement in our newsletter, annual report and social media
- Personalised Certificate of Recognition
- Unending gratitude from the 14,000+ patients who are treated in the Hospital every year



PACKAGE 2

CORPORATE PARTNERSHIP

\$1,500 +GST Annual Renewal

INCLUDES:

- Partner company logo recognition at the Hospital
- Company profile and link on our social media one (1) per year
- Two (2) entry tickets to Currumbin Wildlife Sanctuary
- Electronic newsletters to be shared with your organisation
- Partner company name recognition at the Hospital
- Acknowledgement in our newsletter, annual report and social media
- Personalised Certificate of Recognition
- Unending gratitude from the 14,000+ patients who are treated in the Hospital every year



PACKAGE 3

CORPORATE PARTNERSHIP

\$2,500 +GST Annual Renewal

INCLUDES:

- One (1) small paver in the company name
- A private Hospital 'Behind the Scenes' tour for up to four (4) guests (valued at \$500.00/guest)
- Company profile in our newsletter one (1) per year
- Recognition of partnership on website (including a link to partner's website) and social media channels, plus invitations to attend events throughout the year
- Partner company logo recognition at the Hospital
- Company profile and link on our social media one (1) per year
- Two (2) entry tickets to Currumbin Wildlife Sanctuary
- Electronic newsletters to be shared with your organisation
- Partner company name recognition at the Hospital
- Acknowledgement in our newsletter, annual report and social media
- Personalised Certificate of Recognition
- Unending gratitude from the 14,000+ patients who are treated in the Hospital every year



PACKAGE 4

CORPORATE PARTNERSHIP

\$5,000 +GST Annual Renewal

INCLUDES:

- One (1) large paver in the company name
- Recognised as a Corporate Partner at one (1) agreed event per year held to benefit the Hospital Foundation. Events include Open Day, Annual Gala Event, Gift Wrapping, Quarterly 'Vet Talk' and more.
- A private Hospital 'Behind the Scenes' tour for up to four (4) guests (valued at \$500.00/guest)
- Company profile in our newsletter one (1) per year
- Recognition of partnership on website (including a link to partner's website) and social media channels, plus invitations to attend events throughout the year
- Partner company logo recognition at the Hospital
- Company profile and link on our social media one (1) per year
- Two (2) entry tickets to Currumbin Wildlife Sanctuary
- Electronic newsletters to be shared with your organisation
- Partner company name recognition at the Hospital
- Acknowledgement in our newsletter, annual report and social media
- Personalised Certificate of Recognition
- Unending gratitude from the 14,000+ patients who are treated in the Hospital every year

CORPORATE PARTNERSHIP APPLICATION



TERMS AND CONDITIONS

- Corporate Partnership is not transferrable.
- Corporate Partnership benefits do not commence until full payment is received.
- Corporate Partnership subscription is payable 12 months in advance and is non-refundable. Payment terms can be by credit card, bank transfer or invoice.
- Corporate Partnership subscription is GST exclusive and may be treated as a TAX INVOICE for GST purposes.
- Any tickets included in or purchased using a Currumbin Wildlife Hospital Foundation support logo or any of its properties logos or branding cannot be used unless prior approval from the Foundation office submitted in writing to foundation@cws.org.au.

ELIGIBILITY

Institutional | Corporate Partnerships are suitable for any organisation that:

is interested or supportive of the protection, conservation and celebration of Australia's wildlife and by joining a group of passionate members dedicated to being educated about the care and conservation of our local wildlife.

ACKNOWLEDGEMENT

Review the above Terms and Conditions and sign your acknowledgement below:

☐ I understand that I will be contacted via email when my Corporate Partnership is coming to the end date.

☐ Is interested that my email address will be added to the Currumbin Wildlife Hospital Foundation eNewsletter database and that I can unsubscribe from that list at any time.

Name:

Signature: Date:

CORPORATE PARTNERSHIP

APPLICATION FORM



CORPORATE PARTNERSHIP PACKAGE

- ☐ PACKAGE #1 - \$500 +GST ☐ PACKAGE #2 - \$1,500 +GST
☐ PACKAGE #3 - \$2,500 +GST ☐ PACKAGE #4 - \$5,000 +GST

BUSINESS INFORMATION

Company Name:

ABN:

Contact Name: Position Title:

Phone: Email:

Unit/Apt: Street Address:

Suburb: State: Postcode:

CONTACT INFORMATION

Title: First Name: Surname:

Phone: Email Address:

PAYMENT DETAILS

Credit Card

Amount \$: Card Type: ☐ Visa ☐ MasterCard ☐ Amex

Name on card:

Card No: _____ - _____ - _____ - _____ Expiry Date: ____ / ____ CVV: ____

Signature of Applicant:

GL Code (Office Use only):

THANK YOU
FOR YOUR SUPPORT!



WE LOOK FORWARD TO WORKING TOGETHER!

www.CurrumbinWildlifeHospital.org.au

