



**CURRUMBIN  
WILDLIFE  
SANCTUARY**  
GOLD COAST • AUSTRALIA

**DRAWING LIST**

- SK-01 COVERPAGE
- SK-02 LOCATION PLAN
- SK-03 DETAILED LOCATION PLAN
- SK-04 PROPOSED GROUND FLOOR PLAN
- SK-05 PROPOSED FIRST FLOOR PLAN
- SK-06 PROPOSED ROOF PLAN
- SK-07 ELEVATIONS
- SK-08 SECTIONS
- SK-09 PERSPECTIVES
- SK-10 PERSPECTIVES
- SK-11 PROPOSED CARPARK EXTENT

JOB: CWS01  
DATE: 24/3/2023

**BURLINGBROWN**

CURRUMBIN WILDLIFE SANCTUARY  
**CURRUMBIN WILDLIFE SANCTUARY  
RESEARCH PRECINCT**

LOCATION: YUGAMBEH LANGUAGE REGION\_28 TOMEWIN STREET\_CURRUMBIN\_QLD\_4223.

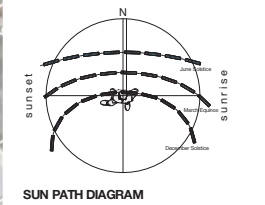
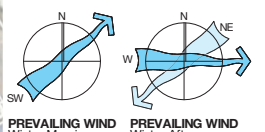
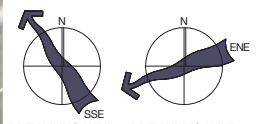
17 SHORT ST SOUTHPORT QLD 4215 AUSTRALIA  
PO BOX 930 SOUTHPORT QLD 4215 AUSTRALIA  
P +61 7 5532 2044 / ABN 35 071 453 257  
MAIL@BURLINGBROWN.COM  
BURLINGBROWN.COM

Preliminary Issue

ISSUE  
**P3**



**PROPERTY DESCRIPTION:**  
 Traditional Custodians: Yugambeh Language Region  
 Location: 27 Millers Drive Currumbin 4223  
 Lot: 2 on RP192133  
 Site Area: 10,985 SQ Metres  
 Local Authority Area: Gold Coast City Council  
 Division: 14



JOB: CWS01

DATE: 24/3/2023

**BURLINGROW**

17 SHORT ST. SUDBURY QLD 4215 AUSTRALIA  
 P 481 7 5532 2844 / FAX 481 7 071 453 257  
 MAIL@BURLINGROW.COM  
 BURLINGROW.COM

**LOCATION PLAN**  
 CURRUMBIN WILDLIFE SANCTUARY RESEARCH PRECINCT SCALE 1:200000A1  
 0 20 40 60 80 100 120 140m



CURRUMBIN WILDLIFE SANCTUARY  
**CURRUMBIN WILDLIFE SANCTUARY RESEARCH PRECINCT**  
 LOCATION: YUGAMBEH LANGUAGE REGION\_28 TOMWIN STREET\_CURRUMBIN\_QLD\_4223.

**CURRUMBIN WILDLIFE SANCTUARY**  
 GOLD COAST • AUSTRALIA

Preliminary Issue

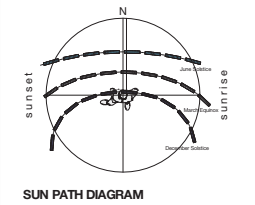
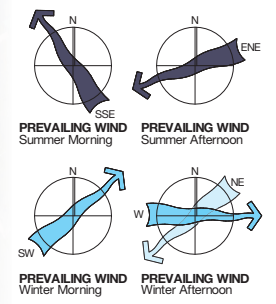
ISSUE P3



**PROPERTY DESCRIPTION:**  
 Traditional Custodians: Yugambah Language Region  
 Location: 27 Millers Drive Currumbin 4223  
 Lot: 2 on RP192133  
 Site Area: 10,985 SQ Metres  
 Local Authority Area: Gold Coast City Council  
 Division: 14

**LOCATION PLAN LEGEND**

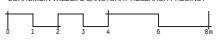
- Existing Buildings
- New / Refurbished Buildings
- New Paths / Hardscaping



JOB: CWS01  
 DATE: 24/3/2023  
**BURLINGCROWN**

17 SHORT ST. SUDBURY QLD 4215 AUSTRALIA  
 P 41 7 5532 2844 / FAX 41 7 5532 2837  
 WWW.BURLINGCROWN.COM  
 BURLINGCROWN.COM

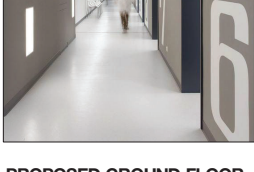
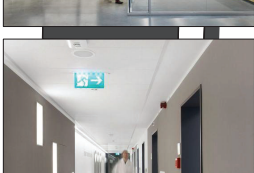
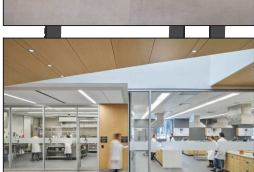
**DETAILED LOCATION PLAN**  
 CURRUMBIN WILDLIFE SANCTUARY RESEARCH PRECINCT SCALE 1:1000A1



CURRUMBIN WILDLIFE SANCTUARY  
**CURRUMBIN WILDLIFE SANCTUARY RESEARCH PRECINCT**  
 LOCATION: YUGAMBAH LANGUAGE REGION\_28 TOMWIN STREET\_CURRUMBIN\_QLD\_4223.

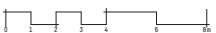


Preliminary  
 Issue  
**PI**



**PROPOSED GROUND FLOOR PLAN**

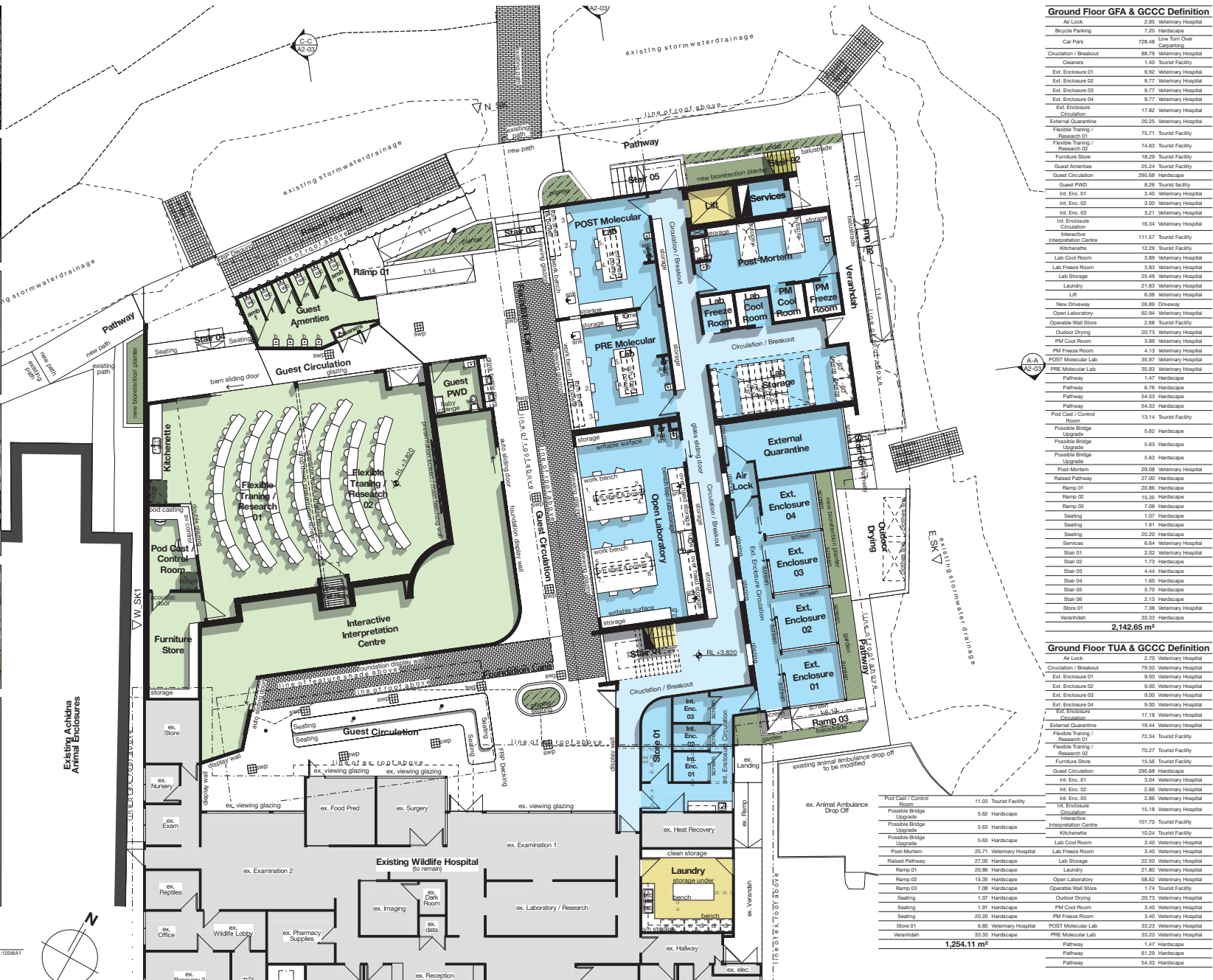
CURRUMBIN WILDLIFE SANCTUARY RESEARCH PRECINCT SCALE 1:1000000



CURRUMBIN WILDLIFE SANCTUARY

**CURRUMBIN WILDLIFE SANCTUARY RESEARCH PRECINCT**

LOCATION: YUGAMBEH LANGUAGE REGION\_28 TOMWIN STREET\_CURRUMBIN\_OLD\_4223.



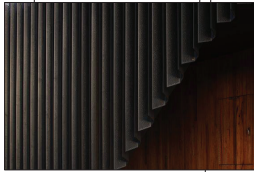
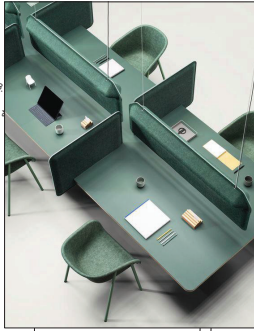
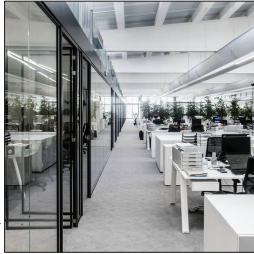
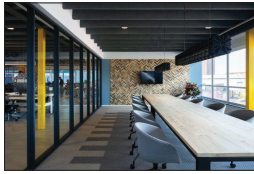
**Ground Floor GFA & GCCC Definition**

Air Lock	2.96	Veterinary Hospital
Boys' Parking	7.20	Hardscape
Car Park	728.48	Low Turn Over Carpark
Circulation / Breakout	88.79	Veterinary Hospital
Cleaners	1.40	Tourist Facility
Ext. Enclosure 01	8.92	Veterinary Hospital
Ext. Enclosure 02	9.77	Veterinary Hospital
Ext. Enclosure 03	9.77	Veterinary Hospital
Ext. Enclosure 04	9.77	Veterinary Hospital
Ext. Enclosure	17.82	Veterinary Hospital
External Quarantine	20.25	Veterinary Hospital
Flexible Training / Research 01	75.71	Tourist Facility
Flexible Training / Research 02	74.63	Tourist Facility
Furniture Store	18.29	Tourist Facility
Guest Amenities	25.24	Tourist Facility
Guest Circulation	295.68	Hardscape
Guest PWD	4.26	Tourist Facility
Int. Enc. 01	3.40	Veterinary Hospital
Int. Enc. 02	3.00	Veterinary Hospital
Int. Enc. 03	3.21	Veterinary Hospital
Int. Enclosure	16.34	Veterinary Hospital
Interpretation Centre	111.57	Tourist Facility
Kitchenette	12.29	Tourist Facility
Lab Cool Room	3.89	Veterinary Hospital
Lab Freezer Room	3.83	Veterinary Hospital
Lab Storage	25.49	Veterinary Hospital
Laundry	21.83	Veterinary Hospital
Lift	6.08	Veterinary Hospital
New Driveway	24.89	Hardscape
Open Laboratory	63.94	Veterinary Hospital
Operable Wall Store	2.68	Tourist Facility
Outdoor Drying	20.73	Veterinary Hospital
PM Cool Room	3.89	Veterinary Hospital
PM Freezer Room	4.19	Veterinary Hospital
PRE Molecular Lab	35.97	Veterinary Hospital
PRE Molecular Lab	35.93	Veterinary Hospital
Pathway	1.47	Hardscape
Pathway	56.78	Hardscape
Pathway	54.53	Hardscape
Pathway	54.33	Hardscape
Pod Cast / Control Room	13.14	Tourist Facility
Possible Bridge Upgrade	5.62	Hardscape
Possible Bridge Upgrade	5.63	Hardscape
Possible Bridge Upgrade	5.63	Hardscape
Post-Mortem	29.08	Veterinary Hospital
Raised Pathway	27.00	Hardscape
Ramp 01	20.86	Hardscape
Ramp 02	15.35	Hardscape
Ramp 03	7.08	Hardscape
Seating	1.07	Hardscape
Seating	1.91	Hardscape
Seating	20.20	Hardscape
Services	6.64	Veterinary Hospital
Stair 01	2.08	Veterinary Hospital
Stair 02	1.73	Hardscape
Stair 03	4.44	Hardscape
Stair 04	1.60	Hardscape
Stair 05	5.70	Hardscape
Stair 06	2.13	Hardscape
Store 01	7.38	Veterinary Hospital
Verandah	33.33	Hardscape
<b>Total</b>	<b>2,142.65</b>	<b>m<sup>2</sup></b>

**Ground Floor TUA & GCCC Definition**

Air Lock	2.70	Veterinary Hospital
Circulation / Breakout	79.50	Veterinary Hospital
Ext. Enclosure 01	9.00	Veterinary Hospital
Ext. Enclosure 02	9.00	Veterinary Hospital
Ext. Enclosure 03	9.00	Veterinary Hospital
Ext. Enclosure 04	9.00	Veterinary Hospital
Ext. Enclosure	17.18	Veterinary Hospital
External Quarantine	19.44	Veterinary Hospital
Flexible Training / Research 01	73.34	Tourist Facility
Flexible Training / Research 02	15.56	Tourist Facility
Furniture Store	295.68	Hardscape
Guest Circulation	3.04	Veterinary Hospital
Int. Enc. 01	2.66	Veterinary Hospital
Int. Enc. 02	2.86	Veterinary Hospital
Int. Enclosure	15.18	Veterinary Hospital
Interpretation Centre	101.70	Tourist Facility
Kitchenette	10.24	Tourist Facility
Lab Cool Room	3.40	Veterinary Hospital
Lab Freezer Room	3.40	Veterinary Hospital
Laundry	22.50	Veterinary Hospital
Open Laboratory	58.62	Veterinary Hospital
Operable Wall Store	1.74	Tourist Facility
Outdoor Drying	20.73	Veterinary Hospital
PM Cool Room	3.40	Veterinary Hospital
PM Freezer Room	3.40	Veterinary Hospital
POST Molecular Lab	33.23	Veterinary Hospital
PRE Molecular Lab	33.23	Veterinary Hospital
Verandah	33.33	Hardscape
<b>Total</b>	<b>1,254.11</b>	<b>m<sup>2</sup></b>
Pathway	1.47	Hardscape
Pathway	61.29	Hardscape
Pathway	54.93	Hardscape





**PROPOSED FIRST FLOOR PLAN**

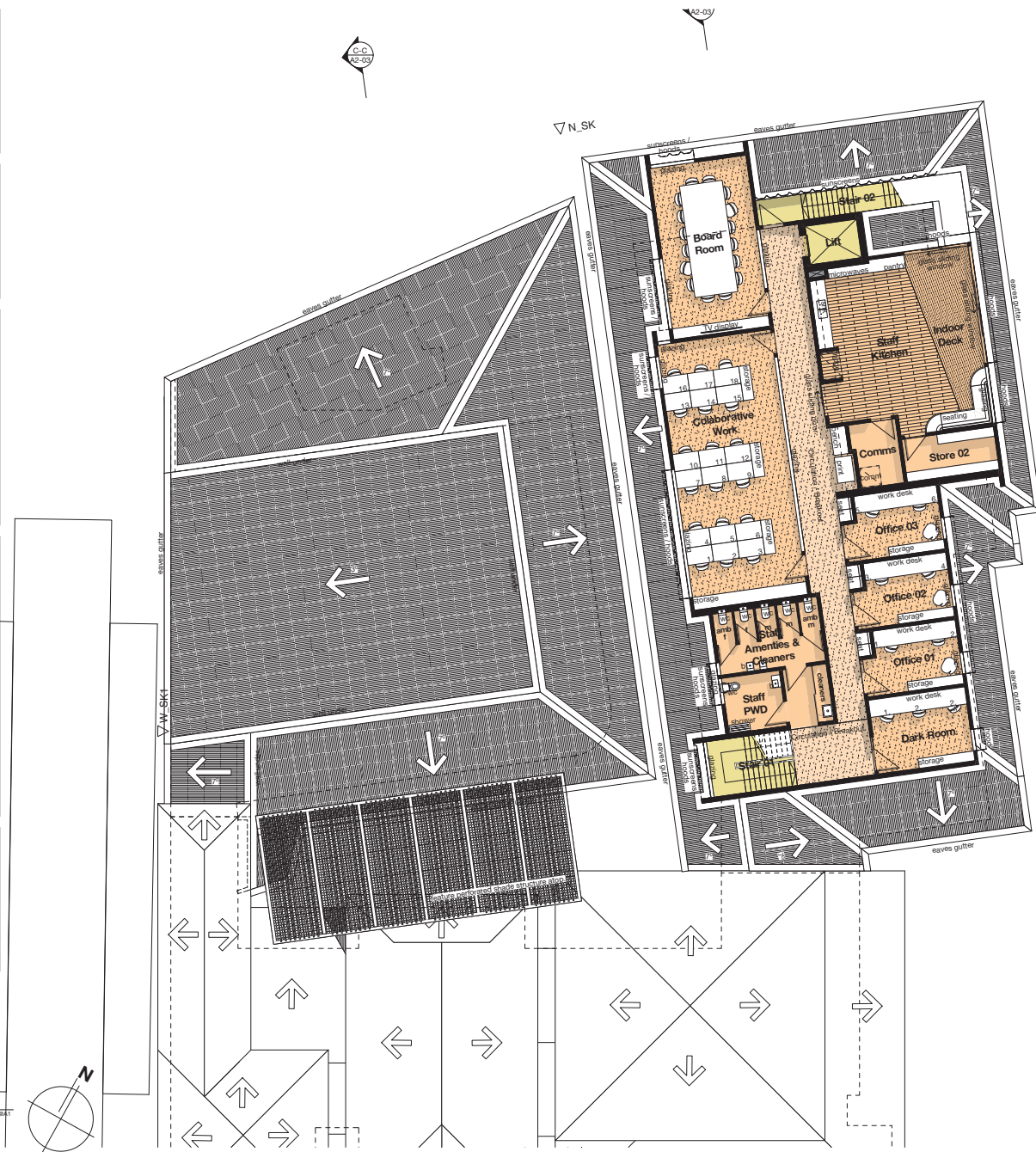
CURRUMBIN WILDLIFE SANCTUARY RESEARCH PRECINCT SCALE 1:1000000

0 1 2 3 4 5 6 8

CURRUMBIN WILDLIFE SANCTUARY

**CURRUMBIN WILDLIFE SANCTUARY RESEARCH PRECINCT**

LOCATION: YUGAMBHE LANGUAGE REGION\_28 TOMWIN STREET\_CURRUMBIN\_OLD\_4223.



First Floor GFA & GCCC Definition	
Board Room	39.14 Office
Circulation / Breakout	58.55 Office
Collaborative Work	70.29 Office
Comms	7.52 Office
Dark Room	17.60 Veterinary Hospital
Indoor Deck	19.70 Office
Lift	6.32 Veterinary Hospital
Office 01	14.08 Office
Office 02	14.08 Office
Office 03	14.39 Office
Staff Amenities & Cleaners	22.30 Office
Staff Kitchen	41.81 Office
Staff PWD	8.41 Office
Star 01	8.38 Veterinary Hospital
Star 02	7.85 Handicapped
Store 02	10.70 Office
<b>361.15 m<sup>2</sup></b>	
First Floor TUA & GCCC Definition	
Board Room	38.00 Office
Circulation / Breakout	57.68 Office
Collaborative Work	65.72 Office
Dark Room	15.53 Veterinary Hospital
Office 01	12.70 Office
Office 02	12.70 Office
Office 03	12.70 Office
Store 02	8.60 Office
<b>221.61 m<sup>2</sup></b>	

JOB: CWS01  
 DATE: 24/3/2023  
**BURLINGROWN**

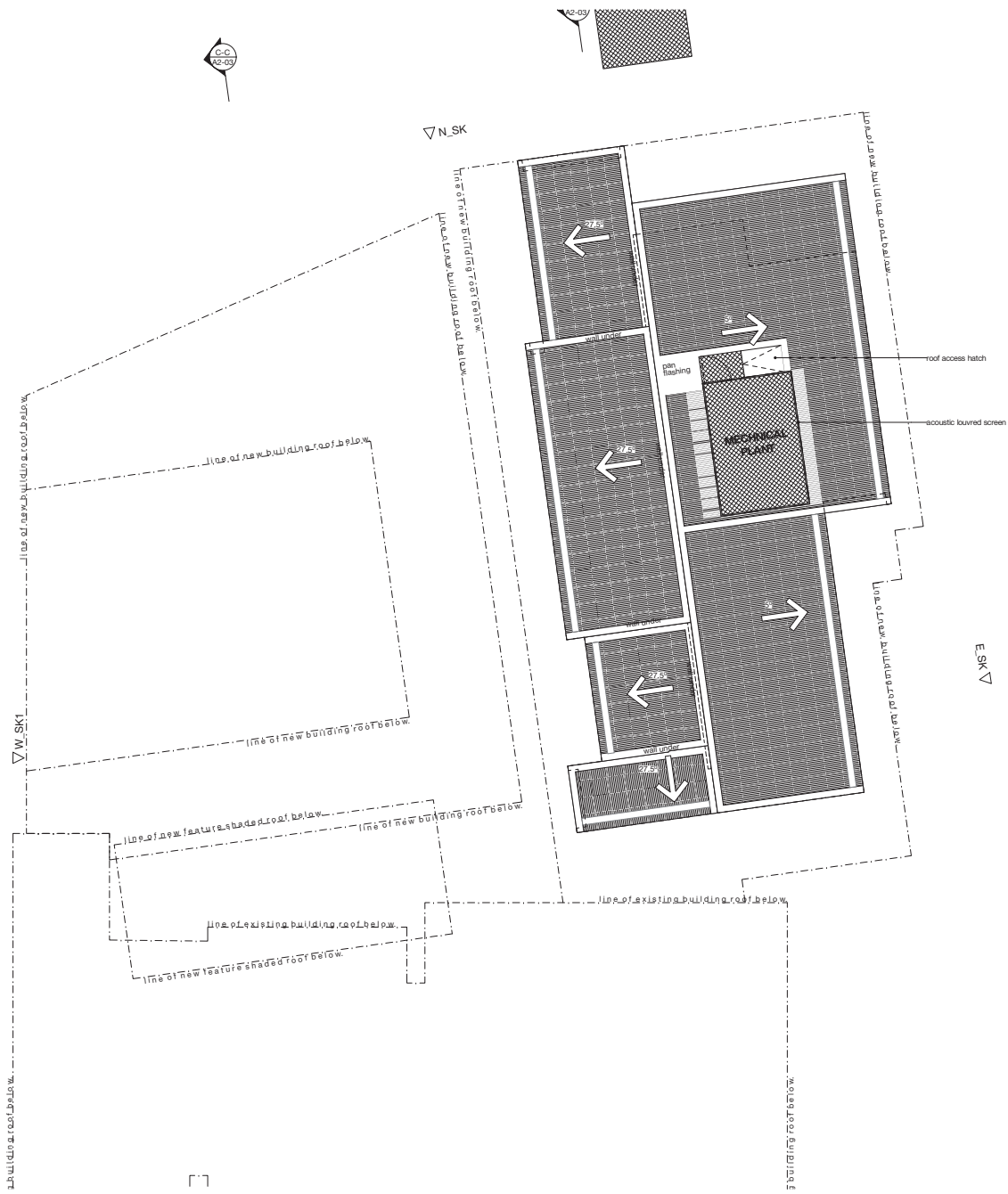
17 BROAD ST. SUITE 101 QLD 4215 AUSTRALIA  
 P +61 7 5532 2844 / FAX +61 7 5532 2837  
 WWW.BURLINGROWN.COM  
 MAIL@BURLINGROWN.COM  
 BURLINGROWN.COM



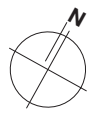
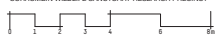
Preliminary Issue

JOB: CWS01  
 DATE: 24/3/2023  
**BURLINGROWN**

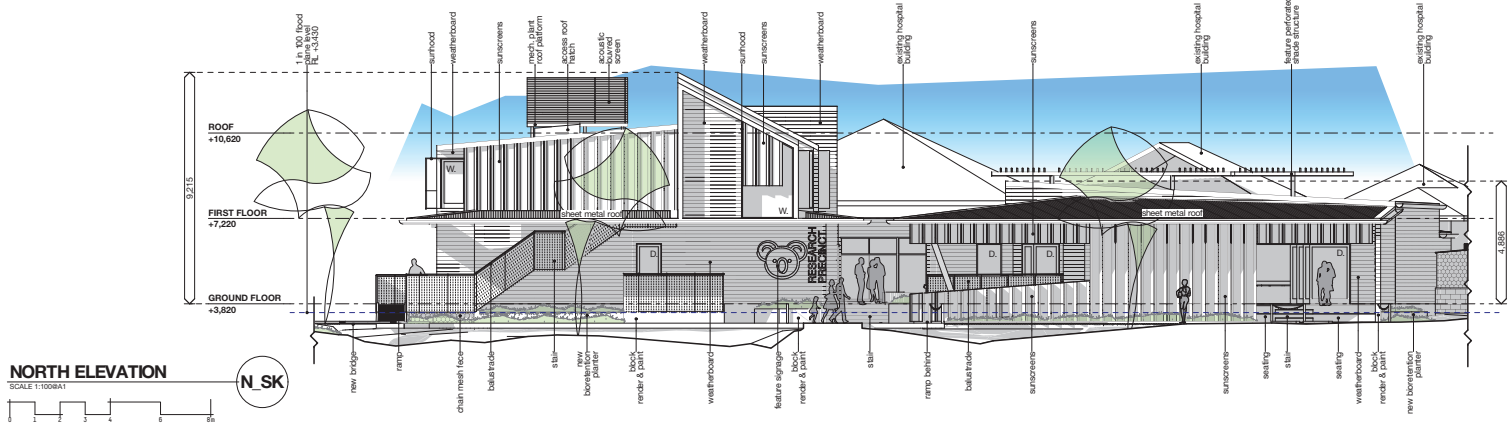
17 BOKT ST. SOUTHERB QLD 4215 AUSTRALIA  
 P 41 7 5532 2844 / FAX 41 7 553 2837  
 WWW.BURLINGROWN.COM  
 BURLINGROWN.COM



**PROPOSED ROOF PLAN**  
 CURRUMBIN WILDLIFE SANCTUARY RESEARCH PRECINCT SCALE 1:1000A1

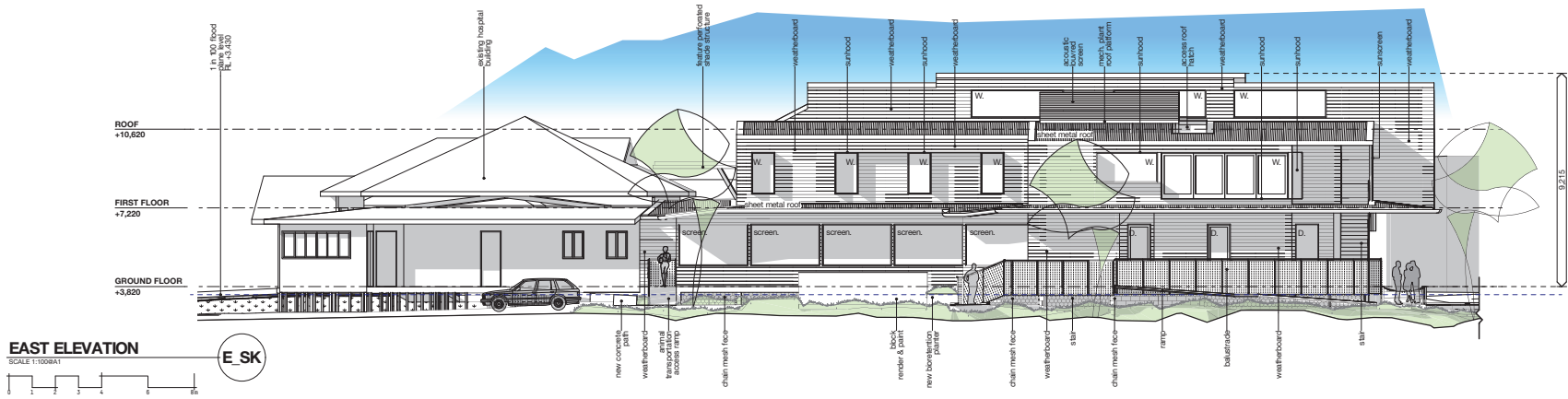


**CURRUMBIN WILDLIFE SANCTUARY**  
**CURRUMBIN WILDLIFE SANCTUARY RESEARCH PRECINCT**  
 LOCATION: YUGAMBEH LANGUAGE REGION\_28 TOMWIN STREET\_CURRUMBIN\_OLD\_4223.



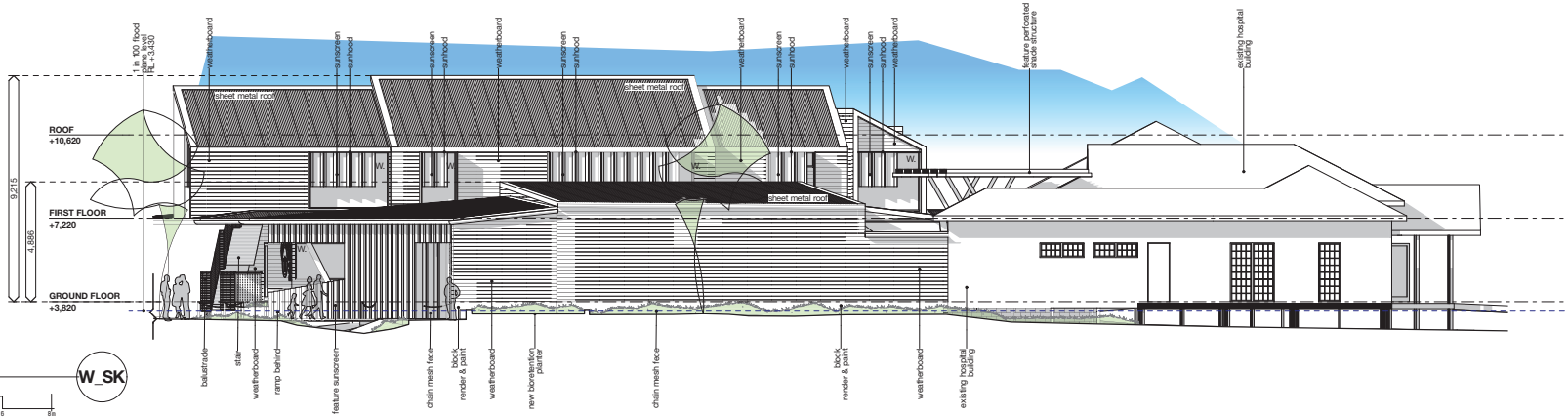
NORTH ELEVATION

N SK



EAST ELEVATION

E SK



WEST ELEVATION

W SK

CURRUMBIN WILDLIFE SANCTUARY  
**CURRUMBIN WILDLIFE SANCTUARY RESEARCH PRECINCT**  
 LOCATION: YUGAMBEH LANGUAGE REGION\_28 TOMWIN STREET\_CURRUMBIN\_QLD\_4223.

JOB: CWS01

DATE: 24/3/2023

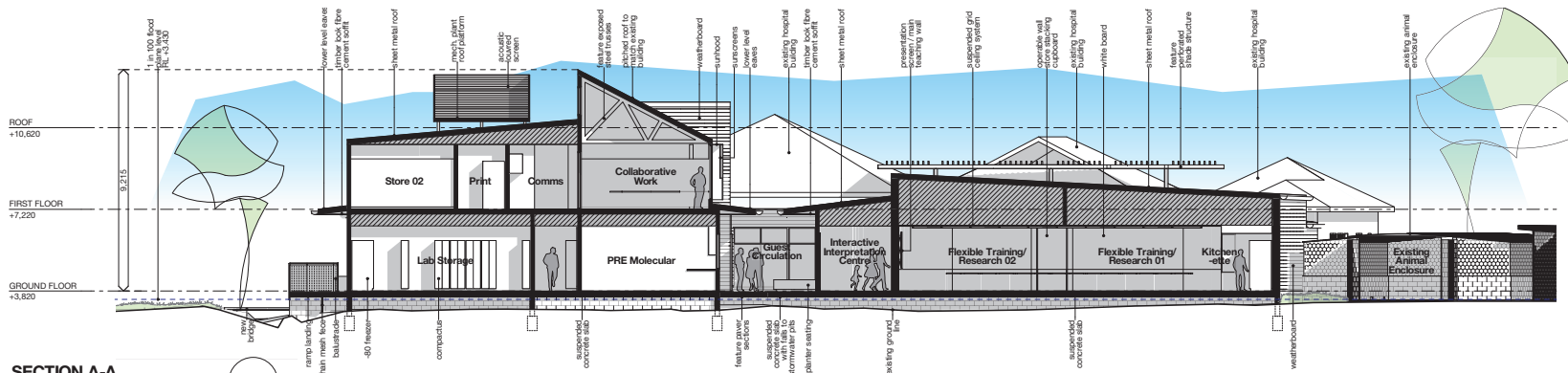
**BURLINGROWN**

17 SHORT ST. SUDBURY QLD 4215 AUSTRALIA  
 P 41 7 5532 2844 / F 41 7 5532 2844  
 MAIL@BURLINGROWN.COM  
 BURLINGROWN.COM



Preliminary Issue

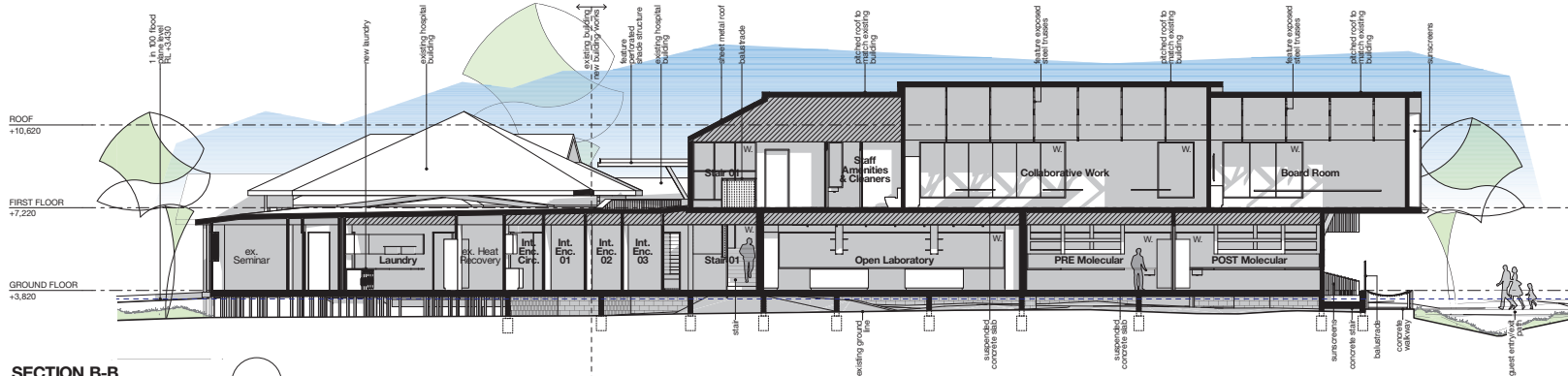
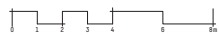
ISSUE P3



SECTION A-A

SCALE 1:1000A1

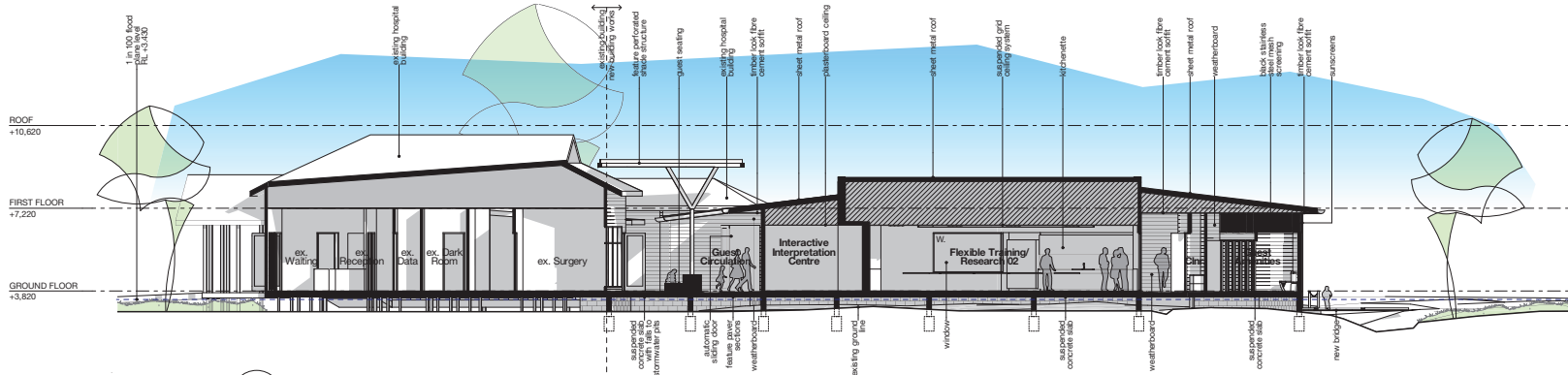
A-A



SECTION B-B

SCALE 1:1000A1

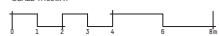
B-B



SECTION C-C

SCALE 1:1000A1

C-C



CURRUMBIN WILDLIFE SANCTUARY

# CURRUMBIN WILDLIFE SANCTUARY RESEARCH PRECINCT

LOCATION: YUGAMBEL LANGUAGE REGION\_28 TOMWIN STREET\_CURRUMBIN\_OLD\_4223.





## OPEN LABORATORY PERSPECTIVE

CURRUMBIN WILDLIFE SANCTUARY

# CURRUMBIN WILDLIFE SANCTUARY RESEARCH PRECINCT

LOCATION: YUGAMBEH LANGUAGE REGION\_28 TOMEWIN STREET\_CURRUMBIN\_QLD\_4223.

JOB:  
CWS01

DATE:  
24/3/2023

**BURLING BROWN**

15 GARDY ST. BRISBANE QLD 4000 AUSTRALIA  
PO BOX 600 SOUTHPORT QLD 4215 AUSTRALIA  
P +61 7 5532 2844 / RN 35 071 453 257  
HQ@BURLINGBROWN.COM  
BURLINGBROWN.COM

Preliminary  
Issue

ISSUE  
**P2**



## FLEXIBLE TRAINING / RESEARCH PERSPECTIVE

CURRUMBIN WILDLIFE SANCTUARY

# CURRUMBIN WILDLIFE SANCTUARY RESEARCH PRECINCT

LOCATION: YUGAMBEH LANGUAGE REGION\_28 TOMEWIN STREET\_CURRUMBIN\_QLD\_4223.

JOB:  
CWS01

DATE:  
24/3/2023

**BURLING BROWN**

15 COURT ST BRISBANE QLD 4000 AUSTRALIA  
PO BOX 600 GOSSIPPT QLD 4215 AUSTRALIA  
P +61 7 5532 2044 / RN 35 071 453 257  
HQ@BURLINGBROWN.COM  
BURLINGBROWN.COM

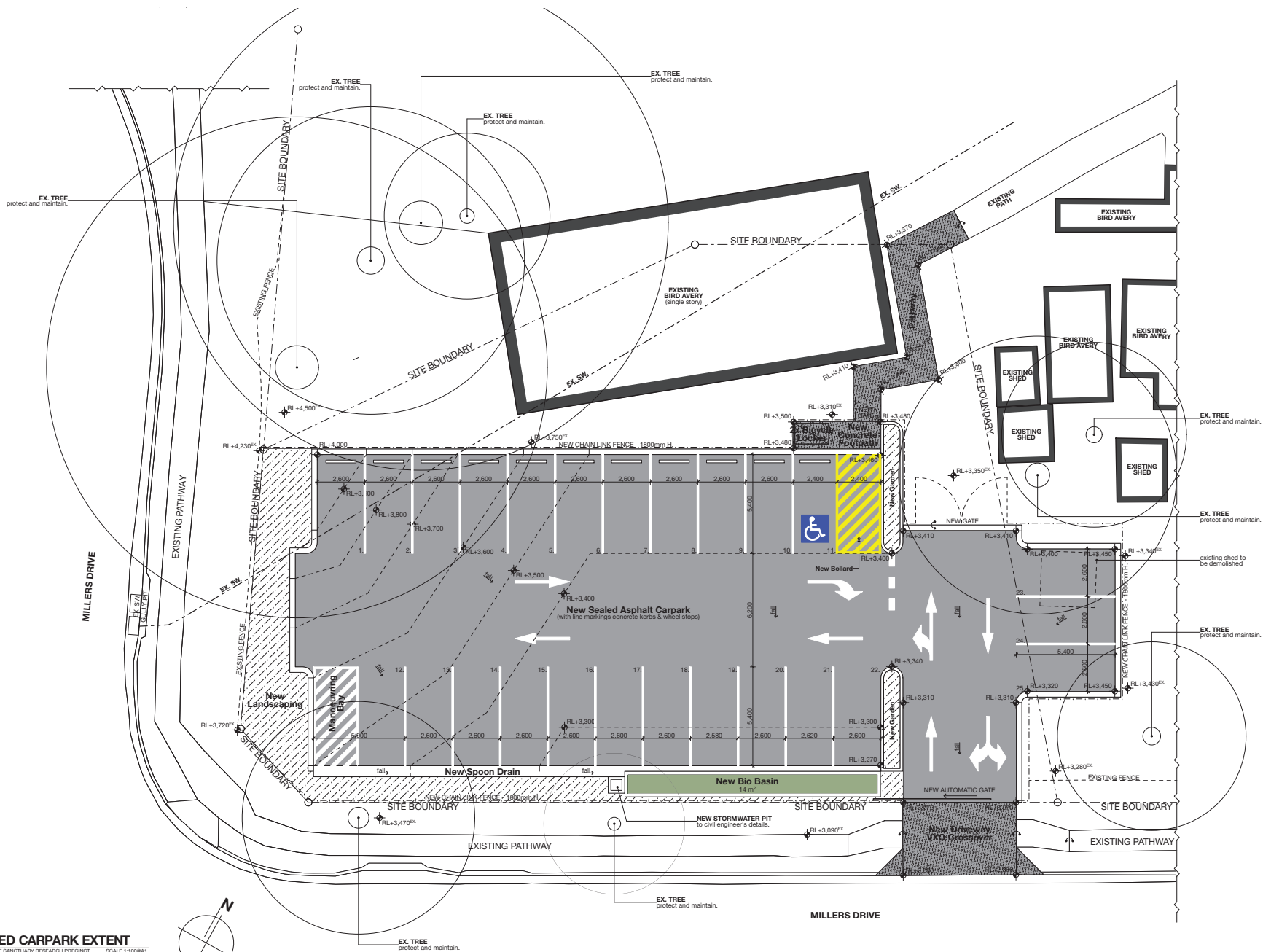
Preliminary  
Issue

ISSUE  
P2

JOB: CWS01  
 DATE: 24/3/2023  
**BURLINGROW**

17 SHORT ST. SOUTHWEST QLD 4215 AUSTRALIA  
 P 41 7 5532 2844 / FAX 41 7 553 2837  
 WWW.BURLINGROW.COM  
 BURLINGROW.COM

Preliminary  
 Issue  
**P5**



**PROPOSED CARPARK EXTENT**

CURRUMBIN WILDLIFE SANCTUARY RESEARCH PRECINCT SCALE 1:1000000



**CURRUMBIN WILDLIFE SANCTUARY RESEARCH PRECINCT**

LOCATION: YUGAMBEH LANGUAGE REGION\_28 TOMWIN STREET\_CURRUMBIN\_OLD\_4223.

